



KOREAN EDUCATIONAL DEVELOPMENT INSTITUTE



The Korean Educational Development Institute
will lead the innovation of the education system,
ensuring that all learners can experience a quality life through learning



The Korean Educational Development Institute (KEDI)

will build an educational data platform and contribute to creating future education systems by proposing effective policy procedures and measures through an in-depth understanding of all learners and reliable analysis of the dynamic educational field.



I believe that education is at the forefront of both personal fulfillment and sustainable societal progress. Korea has made unparalleled advancements in educational access and quality, driven by focused government investment and citizens' strong commitment to learning. However, we are facing a new era with new challenges. Education must now more comprehensively address issues such as increasing life expectancy, population decline, social integration, and equal opportunities.

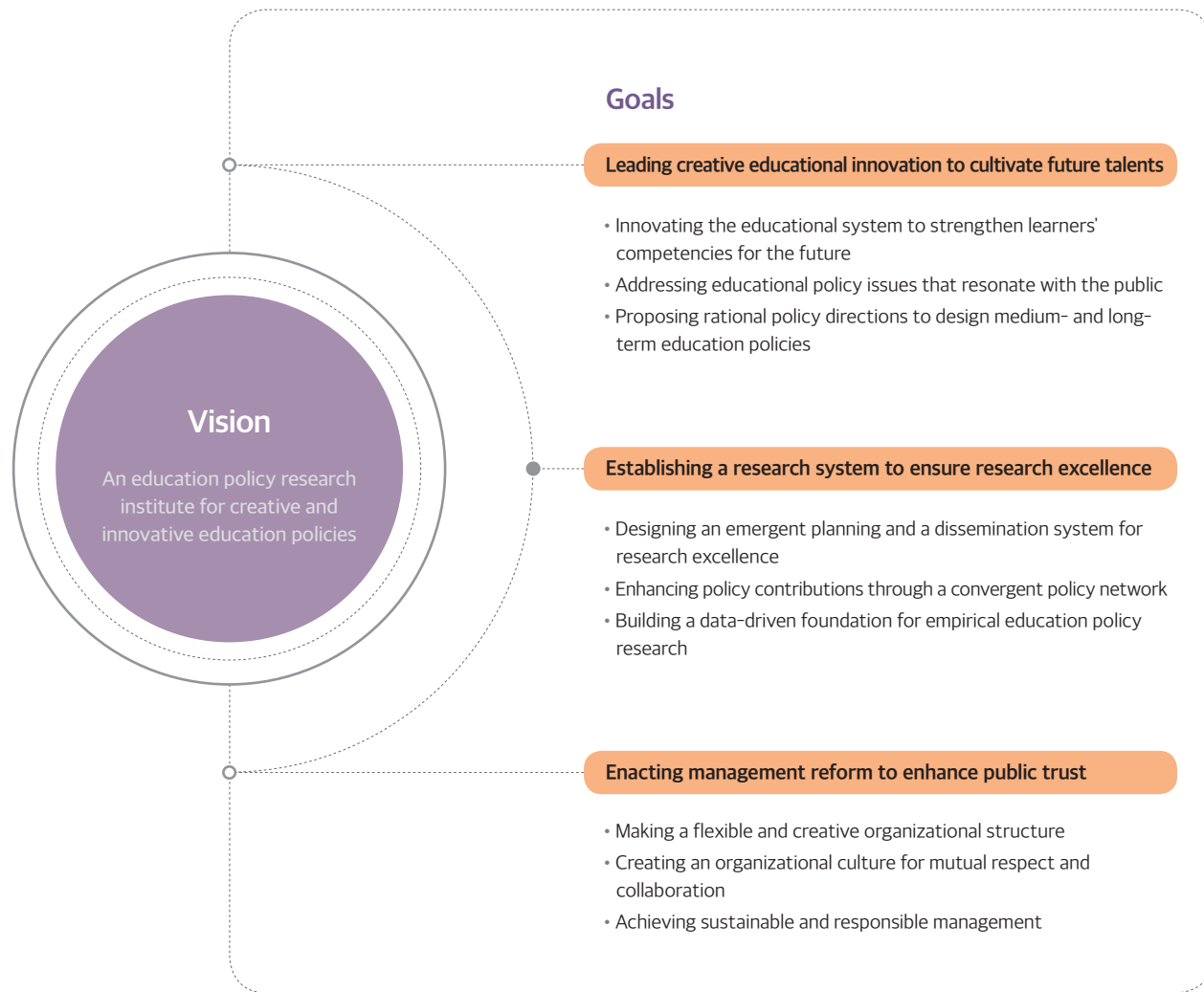
For over five decades, KEDI has played a pivotal role in shaping Korea's education landscape through its expertise in education policy. We remain committed to identifying key challenges, examining their root causes, and conducting data-driven research to build consensus on effective solutions. With careful deliberation, KEDI will continue to take the lead in seeking pragmatic and sustainable approaches for the betterment of future generations.

Your support and encouragement are invaluable as we work toward a brighter future for education. Thank you.

President, Korean Educational Development Institute



KEDI will lead the innovation of the education system so that the quality of life of the people can be improved through learning by conducting comprehensive and scientific research necessary for analyzing and designing future education to solve the problems facing Korean education.



Objectives

- To establish a new education system reflective of traditions and realities of Korea
- To conduct comprehensive and scientific research on issues of Korean education
- To develop an innovative educational system to address challenges of Korean education



Mission

- Comprehensive and systematic policy research and development for primary and secondary education, higher education, and lifelong education
- Education policy research and development on teachers, education finance, school environments, distance education, global education cooperation, gifted and talented education, educational surveys and statistics, etc.
- Development and management of training programs for teachers and educational policy officials
- Research and surveys on ongoing studies and projects, Dissemination of research outcomes, Joint research, Commissioned research, Diagnostics and Consulting



Awards

- 1978.10 The Golden Anniversary Citation Award for selection into world's top 10 educational R&D institutes by Britannica UK
- 1992.10 The Sejong Award on Education
- 1994.10 The Comenius Award from UNESCO and Czech Republic Ministry of Education
- 1997.12 The Associate Centre Award for Excellence and Education from UNESCO-ACEID
- 2008.11 KEDI Journal of Educational Policy indexed in the Social Sciences Citation Index (SSCI)
- 2008.12~2009.12 Ranked No. 1 institute among 'The 100 Think Tanks in Korea' for two years in a row, Hankyung Business Award (Politics. Society. Welfare. Education category)
- 2010.02 The 42nd Korean Library Award by the Korean Association
- 2010.09 The Grand Prize by the Presidential Committee on Library and Information Policy
- 2012.11 Best performance institution for statistical improvement, awarded by the National Statistical Office
- 2013.11 Excellence Award, the 25th Korea Communication Awards (Social history category)
- 2014.06 2014 Grand prize, Customer-Oriented Management Awards (Services category)
- 2014.11 2014 Grand prize, Korea Best Public Services Awards
- 2017.09 Presidential Award on the Day of Statistics by National Statistical Office
- 2019.11 2019 Grand prize, Korea Crime prevention Award
- 2020.09 KEDI's official website received Web Accessibility Certification for 9 consecutive years.
- 2023.04 The Innovation Institution Award in the 2022 Research Institution Evaluation
- 2023.11 A Top-Performing Institution in the Quality Diagnosis by Statistics Korea
- 2024.12 Innovation City Regional Development Award, awarded by the Ministry of Land, Infrastructure and Transport



1970s

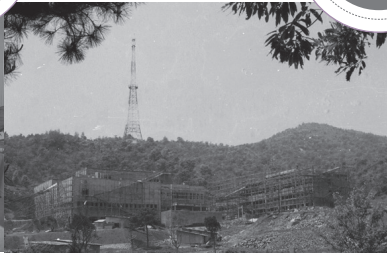
1980s

1990s

2000s

2010s

2020s



Developing a new educational system

- 1972. 8. Foundation of Korean Educational Development Institute (First President Young-Deok Lee, Former Prime Minister) with an objective to perform E-M project (Project for the development of primary and secondary education)
- 1973. 3. Enactment of Act for the Promotion of Korean Educational Development Institute (Law 2016)
- 1974. 3. Establishment of Distance Learning and Correspondence High Schools
- 1979. 1. Designated as a responsible institute for research and development of curriculum and textbooks

Leading an educational reform

- 1980. 9. 1980. 9. TV High School began to broadcast through KBS and MBC
- 1981. 2. Opening of UHF Educational broadcasting
- 1981. 12. Designated as the main R&D institute for reforming curriculum and textbooks
- 1982. 8. 10th Anniversary of KEDI's foundation
- 1982. 12. Completion of the construction of the New Building in Woomyeon-dong
- 1987. 12. Playing a leading role in the Committee for Educational Reform
- 1988. 2. Establishment and operation of Research Center for Computer Education

Redesigning KEDI as an educational policy research institute

- 1990. 12. Establishment of Educational Broadcasting System as a subsidiary of KEDI
- 1991. 11. EBS began to broadcast independently of KBS
- 1992. 6. Hosted an International Workshop on "Education, Employment, and Human Resources Development" with UNESCO-IIEP
- 1992. 8. 20th Anniversary of KEDI's foundation
- 1995. 8. Visit of the Country Review Team from OECD to take stock of Korean educational policy
- 1996. 6. Establishment of Multimedia Educational Research Center
- 1997. 1. EBS and Multimedia Educational Research Center became independent of KEDI
- 1997. 10. Research Center for Vocational Education at KEDI became Korean Research Institute for Vocational Education and Training (KRIVET)
- 1997. 12. Research Center for Curriculum Development separated from KEDI and became Korea Institute of Curriculum and Evaluation (KICE)
- 1997. 12. Center for Educational Statistics became part of KEDI
- 1999. 1. Enactment of 'Establishment, Operation, and Promotion Act for Government-Funded Research Institutes' KEDI belonged to Korea Council of Humanities and Social Sciences under the Office of Prime Minister
- 1999. 6. Hosted an international workshop on Korean economic development and educational policy for governmental officials from countries in Africa and Asia with KOICA

Promoting deregulation and diversification of education and supporting school innovation

- 2002. 8. 30th Anniversary
- 2002. 12. Designated as National Center for Gifted Education
- 2003. 3. Research Center for International Education and Information at KEDI was transferred to be under the Academy of Korean Studies
- 2005. 6. Hosted the EDUEXPO 2005 (Education and Human Resources Innovation EXPO)
- 2006. 5. Designated as Educational Facilities Management Center for Private Investment
- 2008. 2. Academic Credit Bank System and National Center for Lifelong Education became independent of KEDI and became National Institute for Lifelong Education
- 2009. 8. Designated as Center for North Korean Youth Education Support and Center for School Education Support
- 2009. 8. Designated as Center for Departmentalized Classroom Support

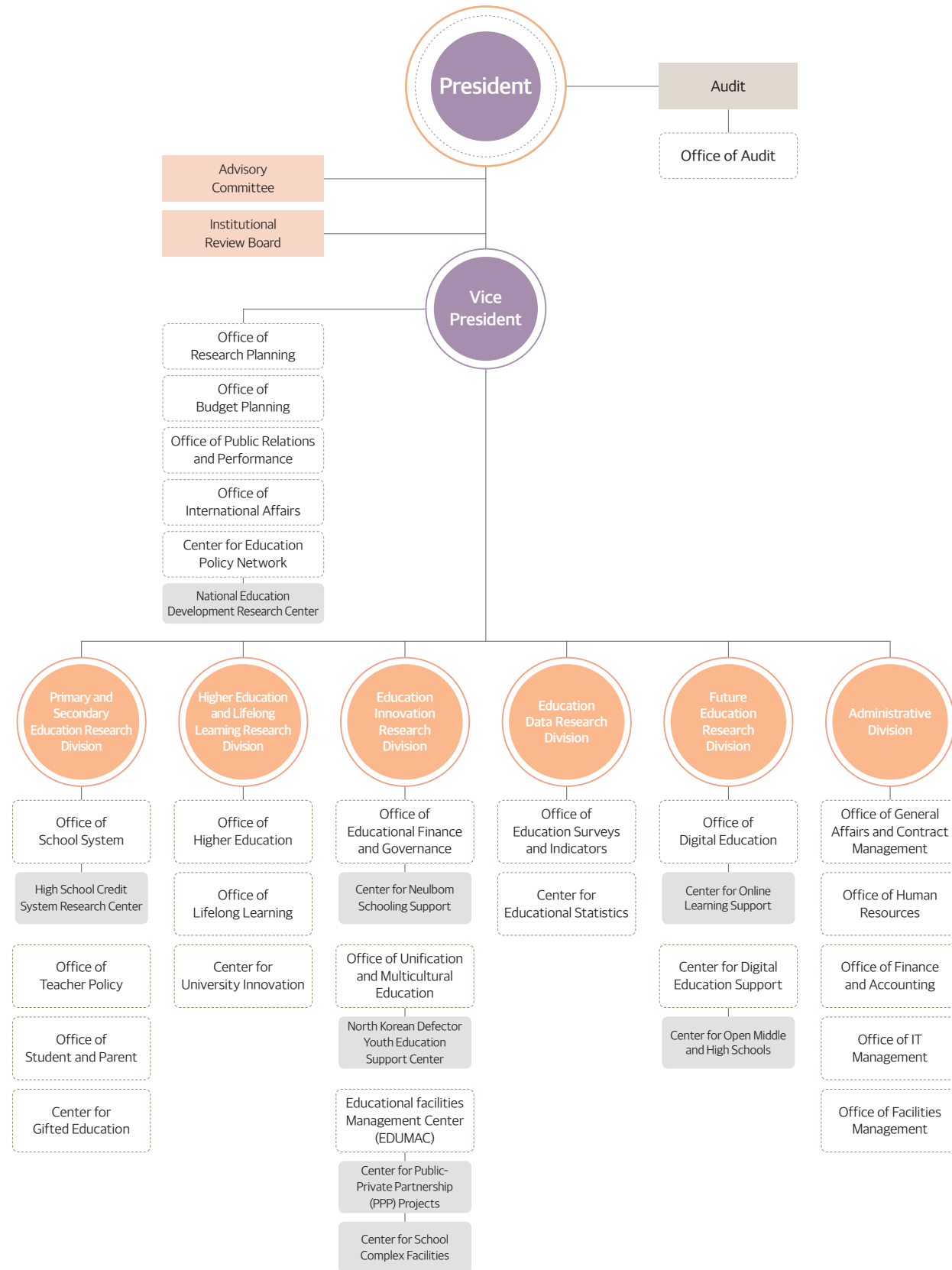
Research on future education in response to a global information society

- 2010. 5. Designated as School Enhancement Research Center and Center for Local Educational Finance Research
- 2010. 7. Designated as Wee Project Research Center
- 2011. 1. Designated as Center for Self-Directed Learning and Support
- 2012. 1. Designated as the host institute for the 5th APEC Meeting of Ministers of Education
- 2012. 7. Designated as Center for School Violence Prevention Research
- 2012. 8. 40th Anniversary
- 2012. 11. Establishment of Open Secondary Schools
- 2012. 11. Designated as a cooperative institute for educational statistics with UNESCO
- 2013. 4. Designated as Center for Free Semester Program
- 2014. 6. Designated as National Evaluation Center for Higher Education Institution
- 2016. 3. Organized the Happy Education EXPO 2016
- 2017. 2. Relocated to Chungbuk Innovation City in Chungcheongbuk-do
- 2017. 6. Designated as National Center for Educational Statistics

Research and development for a leap toward better and future-oriented education

- 2020. 11. 2020.11. Held UNESCO-KEDI Asia-Pacific Regional Policy Seminar
- 2021. 11. Held 2021 Global Korea Convention
- 2022. 8. 50th Anniversary
- 2023. 2. Designated as Center for Neulbom Schooling Support
- 2024. 3. Inauguration of Dr. Youngsun Koh as the 20th President
- 2024. 10. Designated as a Specialized Institute for Public-Private Partnership (PPP) Projects

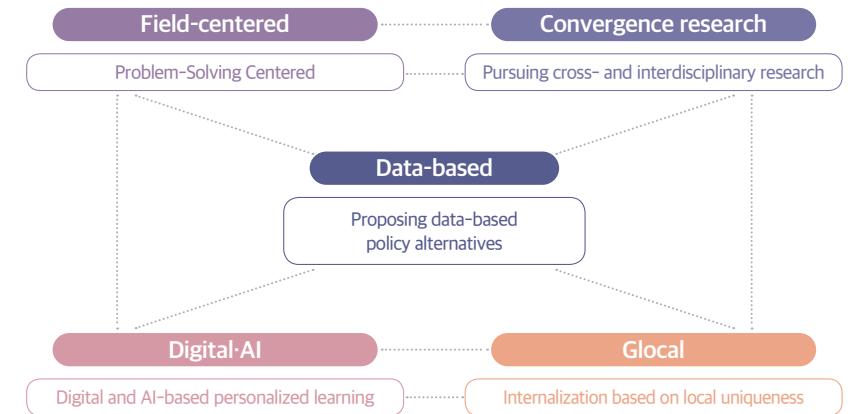
ORGANIZATION



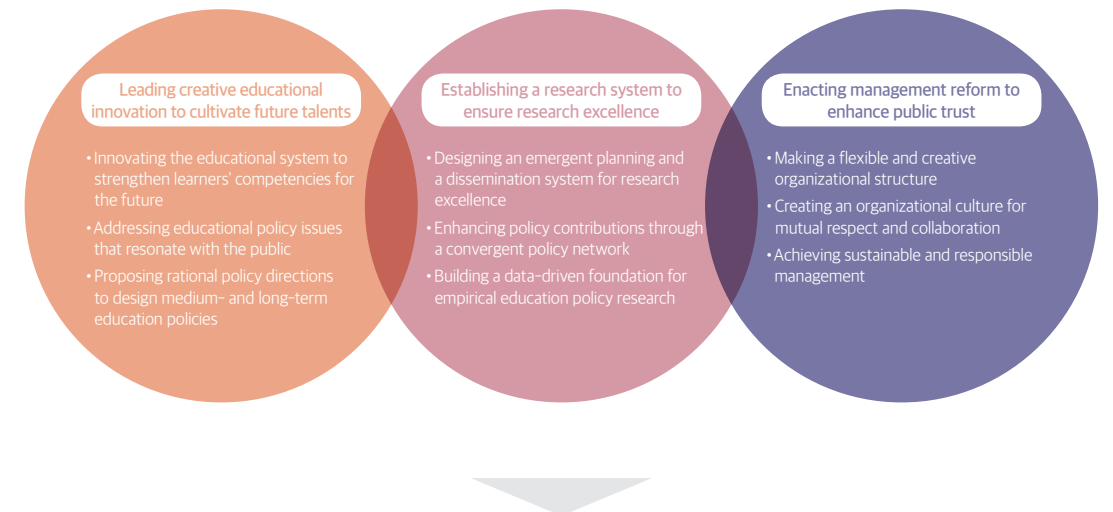
RESEARCH AREAS INTRO

KEDI NOW

Foundation



Goals & Strategies



Vision

An education policy research institute for creative and innovative education policies

Primary and Secondary Education Research Division



Office of School System

- Research on school education
- Research on early childhood education, primary and secondary education and their systems
- Research on education governance
- Research on the innovation of high school education
- Research and projects related to the high school credit system
- Monitoring and analyzing data, indicators, and policy trends related to school education

Office of Teacher Policy

- Research on teachers and teacher policy
- Research and projects on protecting educational activities and supporting teacher recovery
- Research and projects on reducing teachers' workload
- Monitoring and analyzing data, indicators, and policy trends related to teachers

Office of Student and Parent

- Research on students and parents
- Research and projects on preschool and dropout students, and alternative education
- Monitoring and analyzing data, indicators, and policy trends related to students and parents

Center for Gifted Education

- Research and projects on gifted education
- Research and implementation of teacher training for gifted education
- Establishment and management of a comprehensive database for gifted education
- Monitoring and analyzing data, indicators, and policy trends related to gifted education



Higher Education and Lifelong Learning Research Division



Office of Higher Education

- Research on higher education policy and systems
- Projects on higher education policy and systems
- Domestic and international cooperative research on higher education policy and systems
- Monitoring and analyzing data, indicators, and policy trends related to higher education

Office of Lifelong Learning

- Research on lifelong learning systems and governance
- Research on lifelong education policy and current issues
- Research on regional lifelong learning ecosystem and learning community
- Research on the relationship between social change and education
- Research and projects on the linkage between education, academic credentials, and qualifications
- Monitoring and analyzing data, indicators, and policy trends related to lifelong learning

Center for University Innovation

- Research and projects on supporting university innovation
- Research and projects on the accreditation and evaluation of higher education institutions
- Research and capacity evaluation projects of teacher education institutions
- Monitoring and analyzing data, indicators, and policy trends related to the competency evaluation of higher education institutions



Education Innovation Research Division



Office of Educational Finance and Governance

- Research and projects on the finances of early childhood, primary, secondary, higher education and lifelong learning
- Research and projects on local education autonomy and local special education zones
- Research and projects on the evaluation of regional offices of education
- Monitoring and analyzing data, indicators, and policy trends related to education finance and autonomy
- Research and support for projects on Neulbom School

Office of Unification and Multicultural Education

- Comparative research on the education systems of South and North Korea
- Research and projects on unification education
- Research and projects on multicultural education and educational support for North Korean Defector Youths
- Monitoring and analyzing data, indicators, and policy trends related to unification and multicultural education

Educational Facilities Management Center (EDUMAC)

- Research and support for projects on future school space
- Consulting and professional support for private investment projects in educational facilities
- Research and support for projects on school safety
- Consulting and support for projects on school establishment and mixed-use school facilities
- Research and projects on improving primary and secondary school environments
- International exchange and cooperation in educational facilities and environments
- Promotion and training related to educational facilities and environments
- Monitoring and analyzing data, indicators, and policy trends related to educational facilities and environments



Education Data Research Division



Office of Educational Surveys and Indicators

- Longitudinal and cross-sectional surveys and research on education
- Data collection in response to current educational issues and research on policy effect analysis
- Research and projects on the development and management of education indicators
- Research and projects on predictive statistics calculation and analysis
- International exchange and cooperation on education statistics and indicators
- Monitoring and analyzing policy trends related to educational surveys and indicators

Center for Educational Statistics

- Planning tasks related to education statistics
- Survey and publication of basic education statistics in early childhood, primary, secondary and higher education
- Survey and publication of employment information of college and high school graduates
- Survey and publication of lifelong education statistics and lifelong learning
- Establishment and operation of the education statistics survey analysis system
- Provision of education statistics data and collaboration with relevant institutions
- Cooperation with other nations, international organizations and relevant agencies in the area of education statistics
- Monitoring and analyzing policy trends related to education statistics



Future Education Research Division



Office of Digital Education

- Research and projects on AI · digital education
- Research and projects on digital education depending on the needs of school-aged students (general students, student-athletes, and students with disabilities)
- Projects on the development of customized digital contents for school-aged students by user group
- Monitoring and analyzing data, indicators, and policy trends related to digital education

Center for Digital Education Support

- Consulting on the installation and operation of open middle and high schools
- Research on the systems and operating structures of open middle and high schools, and support for their digital transformation
- Research and development of materials on the digital teaching and learning system of open middle and high schools
- Monitoring and analyzing data, indicators, and policy trends related to open middle and high schools
- Research and projects on education for out-of-school school-aged youths

Center for Open Middle and High Schools

- Consulting on the installation and operation of open middle and high schools
- Research and projects on the system and operation of open middle and high schools
- Research and development of materials on the digital teaching and learning system of open middle and high schools
- Monitoring and analyzing data, indicators, and policy trends related to open middle and high schools



Vice President

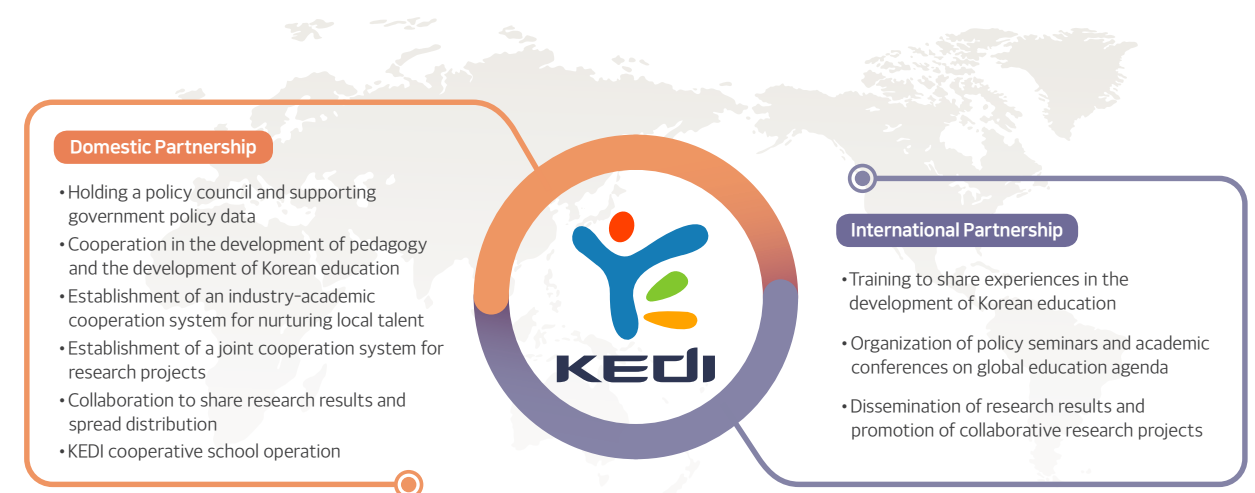


Education Policy Network Center

- Research and projects focused on the efficient establishment and operation of education policy networks
- Research and projects aimed at identifying joint education policy agendas between the central and regional areas
- Research and projects dedicated to collecting on-site improvement requests from both the central and regional areas and supporting responses to current issues
- Management and dissemination of results of educational research and development in cooperation between the central, regional, and related organizations
- Collection, analysis, and sharing of domestic and international education policy information

KEDI aims to establish a stronger and closer collaborative network with domestic and international organizations through exchanging knowledge and research findings.

KEDI aspires to move forward for a better future with successful global partnerships and research collaboration.



Domestic Partnership

KEDI establishes close partnerships with 256 institutions that include central and local governments, educational institutions and public institutions and shares project outcomes. Since relocating to Chungbuk Innovation City, Chungcheongbuk-do, KEDI has developed a cooperative system with local governments, public institutions and educational institutions to foster local talent. KEDI also supports affiliated schools by creating a model of learning ecosystem that coexists with local communities.

International Partnership

KEDI continues to maintain active exchanges and collaborations with 23 governments, international and regional organizations, and research institutes. Using this global network as a stepping stone, KEDI not only disseminates the outcomes of its major research projects but also identifies and conducts joint research initiatives, sharing its accumulated expertise and know-how, as well as Korea's experience and knowledge in educational development, with other countries.

International and regional organizations and governments	Research institutes and associations
Organization for Economic Cooperation and Development	Education Review Office (ERO), New Zealand
UNESCO Headquarters	Russian Academy of Education (RAO), Russia
Asian Development Bank (ADB)	Psychological Institute, Russian Academy of Education, Russia
UNICEF East Asia and Pacific Regional Office (UNICEF EAPRO)	National Center for Research on Evaluation, Standards & Student Testing (CRESST), U.S.A.
SEAMEO Regional Center for Educational Innovation and Technology (SEAMEO INNOTECH)	Vietnam National Institute of Educational Sciences (VNIES), Vietnam
United Nations Educational, Scientific and Cultural Organization (UNESCO Bangkok)	Association for Development of Education in Africa (ADEA)
Organization of Ibero-American States (OEI)	National Institute for Educational Policy Research (NIER), Japan
Office of the National Education Commission (ONEC), Thailand	China National Institute for Education Research (NIER), China
Universities	National Institute for Pedagogical Research (NIPR), France
Education University of Hong Kong (EduHK)	Avloniy National Research Institute, Uzbekistan
Srinakharinwirot University, Thailand	National Institute of Educational Planning and Administration (NIEPA), India
	Institute of International Education, Stockholm University (IIE), Sweden
	The Republican scientific and methodological center for the development of education of the republic of Uzbekistan

KEDI's publications present a variety of policy implications and alternatives based on empirical and data-based research with strong expertise in the fields.

They also provide information and analysis of the new trends in education at the international and domestic levels.



KEDI Research Reports

KEDI's Research Reports provide research data and policy implications drawn from research outcomes. They are available on KEDI's website for the public in order to encourage further utilization.



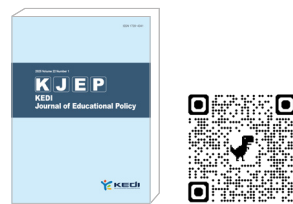
KEDI Brief

The KEDI Brief was launched in 2017 to share and disseminate basic research findings and information that could help the development of future-oriented education. The KEDI Brief is produced and published in the form of a research and analysis brief, concisely summarizing significant and up-to-date domestic and international cases of educational innovation and analyses of policy trends in a timely manner.



The Journal of Korean Education, quarterly academic journal listed in the National Research Foundation of Korea

The Journal of Korean Education is a peer-reviewed quarterly academic journal which focuses on educational policy research.



KEDI Journal of Educational Policy, biannual academic journal listed in SSCI

KEDI Journal of Educational Policy is a biannual peer reviewed journal published in English which contains research findings on educational policies and issues around the world.



Educational Development, bimonthly magazine on educational policy

Educational Development is a bimonthly magazine which features latest educational information and trends as well as pending educational issues.



Educational Policy Forum, papers on pending educational issues

Educational Policy Forum is a monthly paper published online and offline which serves to facilitate discussion on educational policy among domestic opinion leaders involving the Ministry of Education, Offices of Education and educational institutions.



Statistical Yearbook of Education, reference book for Korean educational statistics

Statistical Yearbook of Education annually provides national statistics on education. The statistical data contained in the yearbook is utilized as basic data for educational policy development and research.



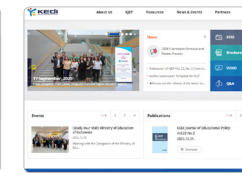
Brief Statistics on Korean Education, educational statistics at a glance

Brief Statistics on Korean Education is an annual statistics source book based on the results of basic educational surveys and international statistics. Its contents help the readers to gain a comprehensive overview on the status of Korean education including important educational statistical indexes and overall statistical data.

KEDI offers Korean Educational Information Service in order to ensure prompt and accurate delivery of educational trends, information and news in the areas of education and educational policy of Korea and the world through various media.



KEDI Homepage
www.kedi.re.kr



KEDI Homepage (ENG)
kedi.re.kr/eng



AskKEDI Electronic Library
askkedi.kedi.re.kr



Korean Educational Statistics Service
kess.kedi.re.kr



Education Policy Network
edpolicy.kedi.re.kr



Portal System of Neulbom Schooling and Afterschool Program
www.afterschool.go.kr



Evaluation of Teacher Education Institutions
necte.kedi.re.kr



Center for Teacher Recovery Support
forteacher.kedi.re.kr



Center for Educational Facilities and Environment Research
www.edumac.kedi.re.kr



North Korean Youth Education
www.hub4u.or.kr



Class on
edu.classon.kr



Comprehensive Database for Gifted and Talented Education
ged.kedi.re.kr



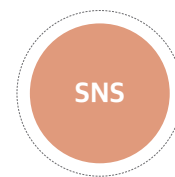
Open Middle Schools
www.cyber.ms.kr



Open High Schools
www.cyber.hs.kr



www.kedi.re.kr/eng



- ✔ KEDI Youtube youtube.com/c/한국교육개발원KEDI
- ✔ KEDI Instagram instagram.com/iam_kedi/
- ✔ KEDI Facebook www.facebook.com/KEDIPR
- ✔ Education Policy Network Kakao Talk Plus Friend pf.kakao.com/_RISxcj
- ✔ Education Policy Network Instagram instagram.com/edpolicy_network/
- ✔ Korean Educational Statistics Service blog blog.naver.com/kedi_cesi

